



B&T

FABRICS &
LEATHERS
CLASS B

Angola

A bold mixture of core and effect yarns to bring the perception of bouclé to a new high.

CLASS B

NUNNS

B&W

ANGOLA



X1010



TN7N7



8290



TB1J5



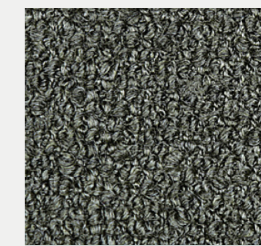
8957



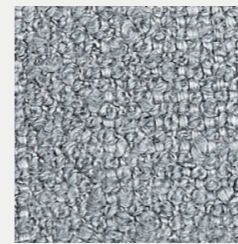
8989



C4C4



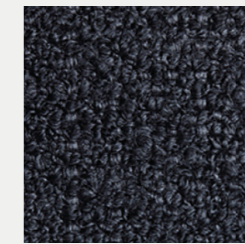
BMBM



T3636



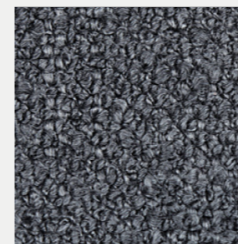
GAGA



C1C1



5959



U3U3



D8D8

Colors may slightly vary due to photographic lighting sources or your monitor settings.

ANGOLA



XE6G3

ANGOLA

PRODUCT SPECIFICATIONS

Technical Informations	Unit	Value	Test Method	Result
Composition		%3 cv, %68 pan, 29%pes		
Weight	gr/m ²	580 ±%5		
Width	cm	140 ±2		
Resistance to Abrasion	martindale wyzenbeek	50.000 100.000	ISO 12947-2 ASTM D4157	
Pilling	2000 cycle	4/5	EN ISO 12945-2	
Brush Pilling		3/4	D3511-99A	
Colour Fastness to Rubbing	dry wet	4/5 4/5	ISO 105-X12	
Tear Strength	warp weft	193 109	ISO 13937-3	
Tensile Strength	warp weft	2565 905	ISO 13934-1	
Elongation	horizontal vertical	15% 41%	ISO 13934-1	
Seam Slippage	warp weft	2 2,5	ISO 13936-2	
Cigarette Test	BS 5852 PART 1 SOURCE 0 / EN 1021-1 / CALL 117 / NFPA 260			Pass
Bleach Cleanable Test	AATCC 101-ACT TM1 With Extra Process			Pass

Our products fulfil the requirements of Annex XVII of REACH (incl. the use of azo-dyes, heavy metals, etc.) as well as the American requirement regarding total content of lead in children's articles]. In stain repellent products, we always use human and environmental friendly C6 fluorocarbons. In FR treatment, we always use DecaBDE free FR compounds. The colours in production might slightly vary from this reference due to different lots in production.

- Wash 30°C gentle cycle.
- Low iron at max 110°C.
- Do not tumble dry.
- Do not bleach.
- Dry-cleaning in perchloroethylene gentle cycle.
- Vacuum regularly. Using soap and water, wipe with a damp cloth or use a special upholstery shampoo. For deeper cleaning, use steam, bleach, alcohol or professional dry clean.



Colors may slightly vary due to photographic lighting sources or your monitor settings.

Aspect

A subtle mélange, textured fabric with a warm soft handle, balancing superior flammability performance and a natural aesthetic.

CLASS B

NUNNS



CAMIRA - ASPECT



ACT10



ACT16



ACT07



ACT13



ACT01



ACT02



ACT17



ACT11



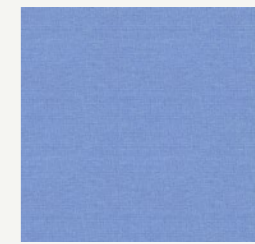
ACT28



ACT20



ACT22



ACT19



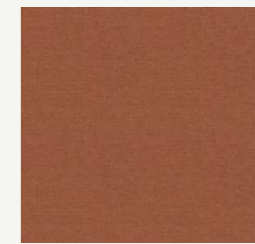
ACT29



ACT26



ACT14



ACT08



ACT23



ACT21



ACT18



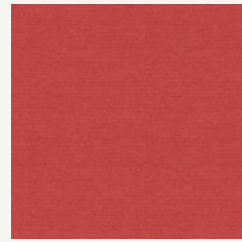
ACT27

Colors may slightly vary due to photographic lighting sources or your monitor settings.

FABRIC & LEATHER



CAMIRA - ASPECT



ACT05



ACT12



ACT03



ACT09



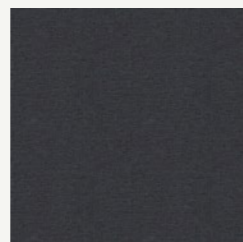
ACT06



ACT04



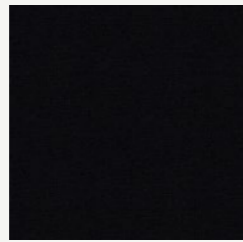
ACT15



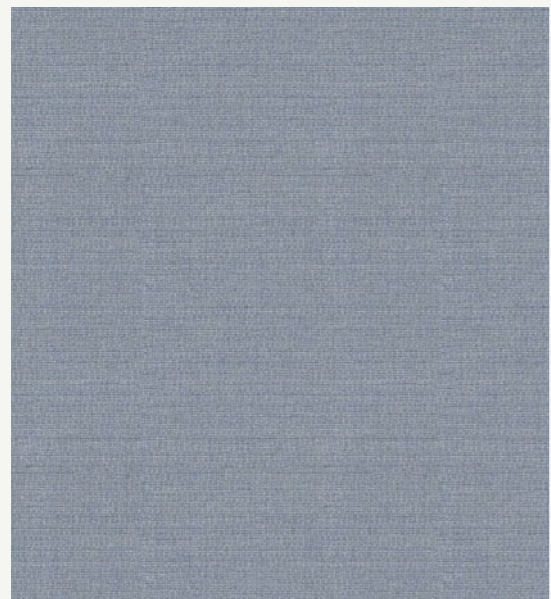
ACT30



ACT24



ACT31



ACT25



CAMIRA - ASPECT

PRODUCT SPECIFICATIONS

Application	Task Seating / Soft Seating
Composition	75% Trevira® CS Flame Retardant Polyester, 25% Polyester. Non metallic dyestuffs.
Environmental	Certified to OEKO-TEX® Standard 100 Certified to Indoor Advantage™ "Gold"
Width	140 cm minimum
Weight	320 g/m2 ±5%
Abrasion Resistance	Heavy duty / 10 year guarantee. Independently certified to ≥50,000 Martindale cycles
Flammability	EN 1021 - 1&2 (cigarette & match), BS 7176 Low Hazard, BS 5852 Ignition source 5 (over CMHR 50kg/m3 foam), BS 7176 Medium Hazard (over CMHR 50kg/m3 foam), DIN 4102 B1, NF D 60-013 (Over 50kg/m3 CMHR foam), ÖNORM B 3825 & A 3800-1 (over CMHR 58kg/m3 foam), UNI 9175 Classe 1 IM
Light Fastness	5 (ISO 105 - B02)
Fastness to Rubbing	Wet: 4, Dry: 4 (ISO 105 - X12)
Bleach cleanable	ISO 105 E03 colour change 4 for dilution factor 1:4 chlorine solution.
Guarantee	10 Years

Cleaning

Vacuum regularly. Wipe with a damp cloth using soap and water or use proprietary upholstery shampoo. For deeper cleaning use steam, bleach, alcohol or professionally dry clean. Can be washed at 60°C.