

	Group	II	III
	Fabric	MEDLEY ATLANTIC VITA	XTREME SYNERGY
Armchair with a small shield - M			

CONFIGURATION	<input type="radio"/> Standard <input type="radio"/> Option	PRICE
---------------	--	-------

SHIELD - Mesh (9 colors Runner). Frame \varnothing 25mm, upholstered. Two fabric layers attached to the frame with zip.

M - a small shield

S - a medium shield

D - a large shield

SEAT, BACKREST, ARMRESTS

Moulded foam with a density of 55kg/m3, upholstered.

BASE

A four-legged metal frame, M115 black semi-matt, M013 burgundy semi-matt or M015 white semi-matt, powdercoated.
Tubular construction with a diameter of \varnothing 25mm, wall thickness 1,5mm. CNC-bent frame, finished with polypropylen feet.

DIMENSIONS



Armchair with a small shield - M

25 kg gross
D / W / H
890/890/940

Armchair with a medium shield - S

26 kg gross
D / W / H
910/940/1290

Armchair with a large shield - D

27 kg gross
D / W / H
1040/940/1290

MESH

upholstered armchair, double mesh back, painted metal frame

This armchair is a perfect solution for a lounge space in an office, waiting room, or reception area.

An extraordinary shape and an unusual approach to the choice of materials are a result of the cooperation with one of the most talented Polish designers Krystian Kowalski. Mesh was designed to enrich your space with an inviting and home-like feeling.

The comfort and cosiness of this product cannot leave any user indifferent.

	Group	II	III
	Fabric	MEDLEY ATLANTIC VITA	XTREME SYNERGY
Sofa with a small shield - M			

CONFIGURATION	<input type="radio"/> Standard <input type="radio"/> Option	PRICE
---------------	--	-------

SHIELD - Mesh (9 colors Runner). Frame \varnothing 25mm, upholstered. Two fabric layers attached to the frame with zip.

M - a small shield

S - a medium shield

D - a large shield

SEAT, BACKREST, ARMRESTS

Moulded foam with a density of 55kg/m³, upholstered.

BASE

A four-legged metal frame, M115 black semi-matt, M013 burgundy semi-matt or M015 white semi-matt, powdercoated. Tubular construction with a diameter of \varnothing 25mm, wall thickness 1,5mm. CNC-bent frame, finished with polypropylen feet.

DIMENSIONS



Sofa with a small shield - M

42 kg gross
D / W / H
940/1840/940

Sofa with a medium shield - S

45 kg gross
D / W / H
940/1860/1290

Sofa with a large shield - D

48 kg gross
D / W / H
940/1940/1290

MESH

upholstered sofa, double mesh back, painted metal frame

This sofa seating is a perfect solution for a lounge space in an office, waiting room, or reception area.

An extraordinary shape and an unusual approach to the choice of materials are a result of the cooperation with one of the most talented Polish designers Krystian Kowalski. Mesh was designed to enrich your space with an inviting and home-like feeling.

The comfort and cosiness of this product cannot leave any user indifferent.

	Group	II
	Frame colours	RUNNER
	Top colours	WHITE PASTEL CANADIAN OAK ALUMINIUM SATINATO
MESHT2 - high		
MESHT1 - low		

TECHNICAL DESCRIPTION

Top - MFC 12mm thick, 3 colors: 67 White Pastel, 31 Canadian Oak, 26 Aluminium Satinato.

Frame - a tubular construction mounted on the MFC-basis – pipe with a diameter of Ø 25mm, wall thickness 1,5mm, CNC-bent.

Basis colours:

- upper part: Upholstery in 9 colors Runner,

- lower part: Upholstery in 9 colors Runner.

Leveling feet - range of 0-10mm

DIMENSIONS



MESHT2
6 kg
gross
D / W / H
470/470/600

MESHT1
7 kg
gross
D / W / H
670/670/488



RUNNER

Group II

R-63034



R-64089



R-66064



R-60999



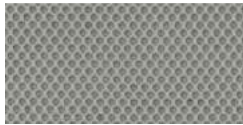
R-66063



R-68056



R-60025



R-60011



R-61128

Technical data

Material
Fabric weight/lm
Abrasion resistance rubs
Pilling resistance
Colour fastness to light
Colour fastness to rubbing
Acoustic test sound absorption
Flammability

polyester 100%
 320g/m2, 510g/lm (16.45 oz/lin.yd.)
 70,000 Martindale cycles, BS EN 14465, EN ISO 12947-2
 scale 1-5, max 5, EN ISO 12945-2 4-5
 scale 1-8, max 8, EN ISO 105 - B02 5-7
 scale 1-5, max 5, EN ISO 105x12 (wet/dry) 4-5
 ISO 354
 BS EN 1021-2 Match, California Bulletin CAL 117-E-Class 1 CA TB 117-2013,
 BS EN 1021-1 cigarette, Class Uno UNI 9175 Class 1 I EMNE, BS EN 1021-1 cigarette

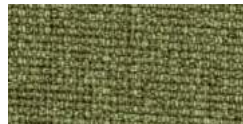
Colours presented in the catalogue may vary from the original colours of furniture.



MEDLEY

Group II

M-63064



M-68005



M-68002



M-68115



M-64019



M-67053



M-67006



M-60999



M-66008



M-61002

Technical data

Material
Fabric weight/lm
Abrasion resistance rubs
Pilling resistance
Colour fastness to light
Colour fastness to rubbing
Acoustic test sound absorption
Flammability

polyester 100%
 364g/m2, 510g/lm
 75,000 Martindale cycles
 Scale 1-5, max. 5 - EN ISO 12945-2 4
 Scale 1-8, max. 8 - EN ISO 105-B02 5-7
 Scale 1-5, max. 5 - EN ISO 105x12 (wet/dry) 4-5/4-5
 ISO 354
 BS EN 1021 - 1:2006 (cigarette), BS EN 1021 - 2:2006, California Bulletin CAL 117-E-Class 1,
 Class Uno UNI 9175 Class 1 I EMME CA TB 117-2013



Group II A-65037

ATLANTIC



A-64089



A-62048



A-61078



A-67043



A-67030



A-60141



A-66064



A-60025



A-60011

Technical data

Material
Fabric weight
Abrasion resistance rubs
Colour fastness to light
Colour fastness to rubbing
Flammability

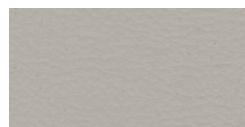
polyester 100%
 353g/m2, 530g/lm
 110,000 Rubs Martindale (EN ISO 12947-2)
 Scale 1-8, max. 8 - EN ISO 105-B02 5-7
 Scale 1-5, max. 5 - EN ISO 105x12 (wet/dry) 4-5/4-5
 ASTM E 84, BS 476 Part 7, class 1, BS EN 1021-1 cigarett, BS EN 1021-2 Match, CA TB 117-2013,
 Class Uno UNI 9175 Class 1 I EMME NF P 92-503 M3

Colours presented in the catalogue may vary from the original colours of furniture.

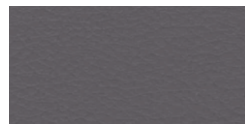


Group II V-23

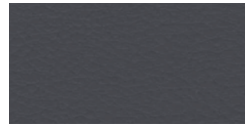
VITA



V-01



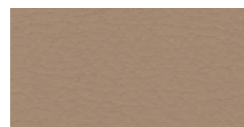
V-04



V-07



V-18



V-02



V-06



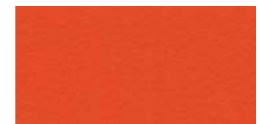
V-15



V-19



V-03



V-05



V-08



V-20

Technical data

Material
Fabric weight
Abrasion resistance rubs
Flexes
Anti-microblal/ Anti-fungal
Flammability

Surface: 98.5% PVC, 1.5% PU, Substrate: 50%, Polyester 50% Cotton
 850g/m2 ±10% (1190G/lin. m ±10%)
 100,000 Martindale cycles, BS EN ISO 5470-2:2003
 BS EN ISO 7854:1997 Method B, 400,000 Flexing cycles
 AATCC 147:2011
 BS EN 1021 - 1:2016 (cigarette), BS EN 1021 - 1:2016 (match),
 BS 5852:2006 Section 4 Ignition Source 5, BS 7176:2017 Medium Hazard,
 NF P 95 503 M2, FMVSS 302 (ISO 3795)



Group III XR420



Group III YS083



XR079



XR160



XR094



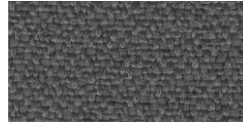
YS158



XR026



XR430



XR081



YS071



XR084



XR108



XR009



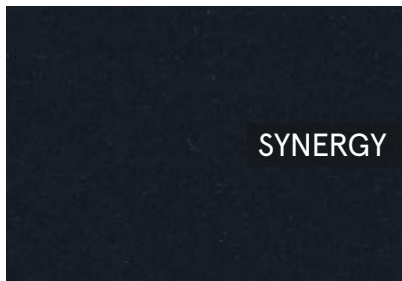
YS166

Technical data

- Material**
- Fabric weight**
- Abrasion resistance rubs**
- Colour fastness to light**
- Colour fastness to rubbing**
- Flammability**

100% Trevira Clame (CS), 100% Recycled (YS). Flame Retardant polyester, Non metallic dyestuffs.
 310g/m2 ±5% (435g/lin.m ±5%)
 60,000 Martindale cycles
 6 (ISO 105 - B02)
 Wet: 4, Dry: 4 (ISO 105 - X12)
 EN 1021 - 1 (cigarette), EN 1021 M - 2 (match), BS 7176 Low Hazard,
 NF P92-507 M1, DIN 4102 B1, UNI 9175 Classe 1 IM, UNI 8456,
 UNI 9174 & UNI 9177 Classe Uno, ÖNORM B 3825 & A 3800 -1, NF D 60-013

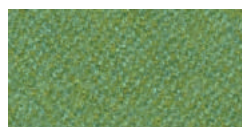
Colours presented in the catalogue may vary from the original colours of furniture.



Group III LDS27



LDS20



LDS53



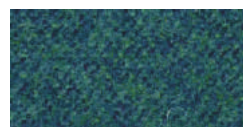
LDS57



LDS84



LDS08



LDS50



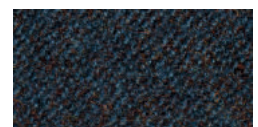
LDS61



LDS85



LDS29



LDS60



LDS69



LDS86



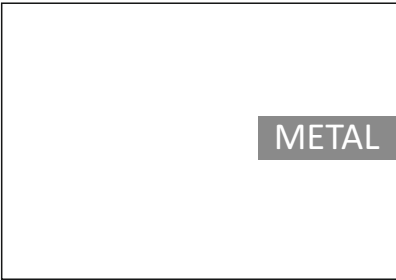
LDS88

Technical data

- Material**
- Fabric weight**
- Abrasion resistance rubs**
- Light Fastness**
- Fastness to Rubbing**
- Flammability**

95% Virgin Wool, 5% Polyamide
 400g/m2 ±5% (560g/lin.m ±5%)
 Independently certified to ≥100,000 Martindale cycles
 ISO 105 - B02 5
 ISO 105 - X12 - Wet: 4, Dry: 4
 EN 1021 - 1 (cigarette), EN 1021 - 2 (match), BS 7176 Low Hazard ,UNI 9175 Classe 1 IM,
 ÖNORM B 3825 & A 3800-1

Colours presented in the catalogue may vary from the original colours of furniture.



M013 - Burgundy semi-matt



M015 - White semi-matt



M115 - Black semi-matt
